



**MARION  
HEALTH**

## Neurology

To schedule an EEG please  
call the Neurodiagnostic  
department at  
**(765) 660-6356** from  
**8:00am-4:30pm**

### What is an EEG?

The electroencephalogram (EEG) is a measure of brain waves. It is a readily available test that provides evidence of how the brain functions over time.

**Dictation turnaround is  
typically a few hours.**

*We are committed to caring for you.*



**MARION  
HEALTH**

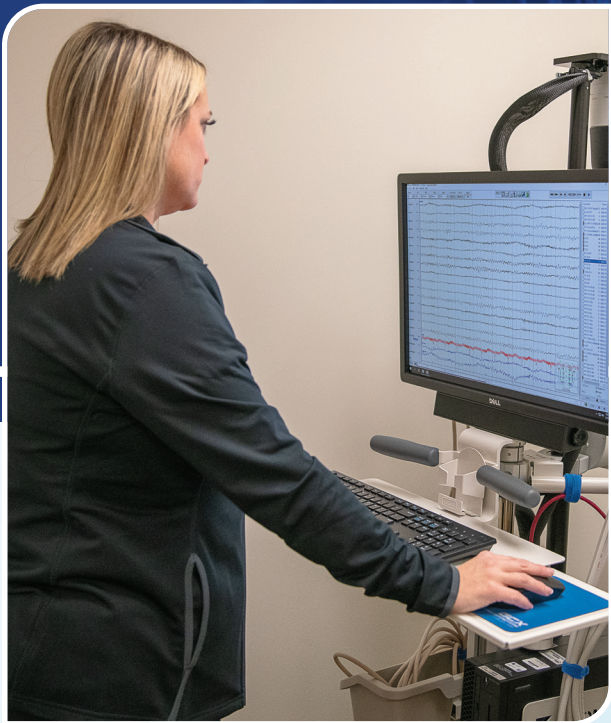
**Neurodiagnostics**  
MGH Campus, 3rd Floor - Main Hospital  
441 N. Wabash Ave.  
Marion, IN 46952

2478531393 (1/24)  
MGH 2303

[marionhealth.com](http://marionhealth.com)







**50%**

of inpatients are  
Neuro patients.

## The EEG is used in the evaluation of brain disorders.

It is also used to evaluate people who are having problems associated with brain function. Some of these problems might include confusion, coma, and tumors, long term difficulties with thinking or memory, or weakening of the specific parts of the body (such as weakness associated with a stroke).

An EEG can also be used to determine brain death.

Types of EEG's available for Inpatients and Outpatients are: Routine EEG's (Awake/Asleep, Awake/Drowsy,) STAT EEG, Cerebral EEG (Brain Death), Up to 1hour EEG, Ambulatory EEG, Long Term Video Monitoring EEG.

## Why Would a doctor Order an EEG?

Most EEG's are done to diagnose and monitor seizure disorders. EEG's also can identify causes of other problems such as sleep disorders and changes in behavior. They're sometimes used to evaluate brain activity after a severe head injury or before a heart or liver transplant. Most common reasons to order an EEG are as follows...

- AMS (*Altered Mental Status*)
- Stroke
- Cardiac Arrest (*Hypothermia Protocol*)
- Syncope/Collapse
- Head Injury
- Memory Loss
- Brain Death
- Seizure Disorder
- Headache
- Dizziness
- Brain Tumors
- New Onset Seizures
- History of Seizures
- Overdose
- Coma
- Encephalopathy
- Encephalitis

## What is the purpose of an EEG?

An EEG is used to detect problems in the electrical activity of the brain that may be associated with certain brain disorders. The measurements given by an EEG are used to confirm or rule out various conditions.

## What can an EEG reveal?

EEG is a noninvasive test that records electrical patters in your brain. The test is used to help diagnose conditions such as seizure, epilepsy, head injuries, dizziness, headache, brain tumors, sleeping problems, etc. It can also be used to confirm brain death. There are no risks associated with an EEG. The test is painless and safe.

Ordering EEG's while patients are inpatients due to their history or diagnosis will help in early diagnosis for the patient, which will then result in early treatment for the patient as well. The role of the EEG is to help physicians to establish an accurate diagnosis.

Dear Community Members,

We are excited to share important information about diagnostic testing and treatment for neurological disorders that are available in our community. These innovations are transforming the way we approach brain health and are making significant differences in the lives of our patients.

Neurodiagnostics plays a crucial role in analyzing and monitoring the brain function. This advanced field promotes effective treatment of neurological diseases and conditions by providing accurate and detailed insights into brain activity. One of the key procedures in neurodiagnostics is the recording of electrical activity from the brain, which helps identify issues associated with various brain disorders.

This non-invasive test is a cornerstone of modern neurology, offering valuable information to neurologists and other healthcare providers. It is used to diagnose and treat a range of conditions including stroke, brain tumors, epilepsy, brain damage, cardiac arrest, syncope, etc.

By detecting these conditions early and accurately, we can ensure that patients receive the most effective treatment possible. Our goal is to enhance the quality of life for individuals effected by these disorders and to provide peace of mind for their families.

We believe that everyone in our community, and the surrounding area, deserves access to the best care available. If you or a loved one are experiencing symptoms related to, or that could be related to, a neurological condition, we encourage you to reach out to your provider. Together we can work towards better brain health.

Thank you,



*Miranda and Teresa, Registered Neurodiagnostics Technologists*  
*Marion Health Neurodiagnostics*  
**765-660-6356**